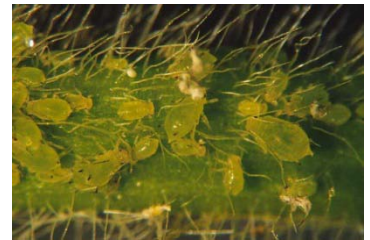


Delivers Maximum Soybean Aphids Control and Yield Protection

PRODUCT ATTRIBUTES	BENEFITS
Long Residual Activity	Provides quick knockdown with long pyrethroid residual and repellency
Broad-spectrum Insect Control	Has 45 labeled insect pests which include, leaf feeders, stem borers, pod/bloom feeders, sap feeders, and also insects that vector diseases
Flexibility of Application	Can be applied alone or in tank mixes with fungicides, post herbicides, and foliar fertilizers
Safety	Caution signal word with a short REI of only 12 hours and a 21 day PHI



APPLICATION RECOMMENDATIONS

2.6 – 6.1 oz

Bean leaf beetle, cutworms, flea beetle, grasshoppers, green cloverworm, thistle caterpillar, silverspotted skipper

4.0 – 10.3 oz

Alfalfa caterpillar, armyworms, blister beetle spp., corn rootworm (adults), dectes stem borer, Japanese beetle (adults), leafhoppers, loopers, Mexican bean beetle, soybean aphid, stink bug, wollybear caterpillar

10.3 oz

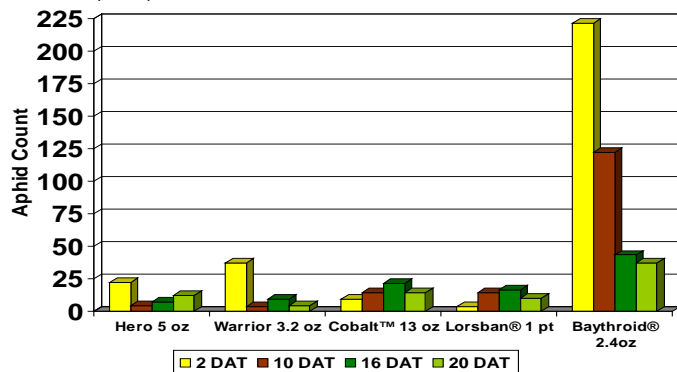
Two spotted spider mite

SPECIAL INFORMATION

- 21 day PHI, 12 hour REI
- Do not apply more then 0.40 lb ai/A per season, or 41 oz/A
- Use a minimum of 2 gallons of finished spray per acre by air or 10 gallons of finished spray per acre by ground
- Do not graze or harvest treated soybean forage, straw, or hay for livestock feed

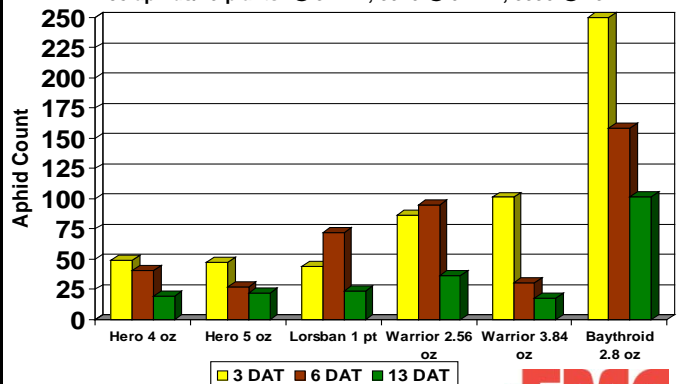
2007 Soybean Aphid Data, ISU

Mean aphid pop. 240/plant 3 days prior to treatment
211 aphids/plant @ 2 DAT, 383 @ 10 DAT, 915 @ 16 DAT, 545 @ 20 DAT



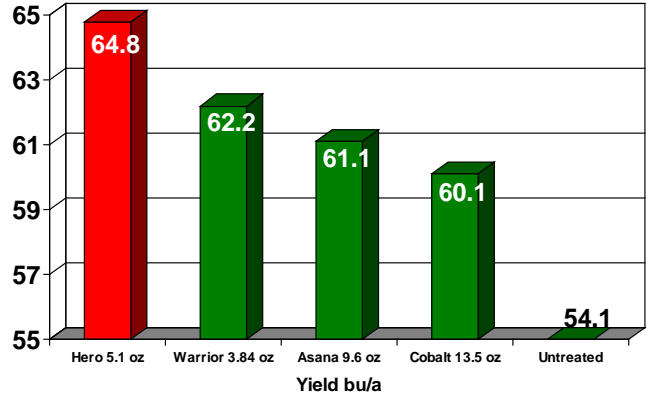
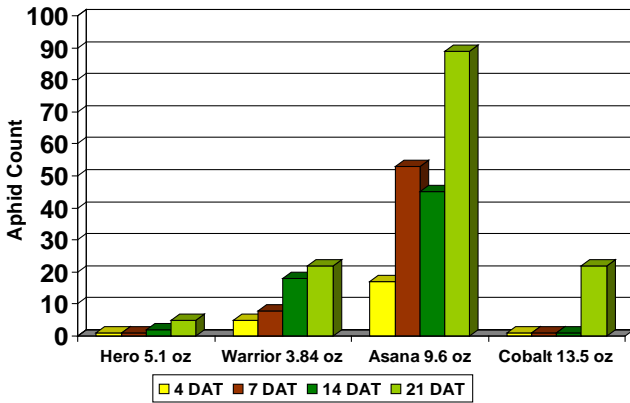
2007 Soybean Insect Data, Univ. of WI

Untreated check had :
1495 aphids/10 plants @ 3 DAT, 3076 @ 6 DAT, 3336 @ 13 DAT



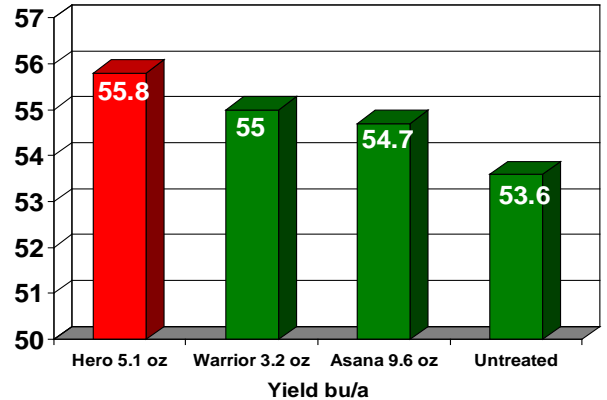
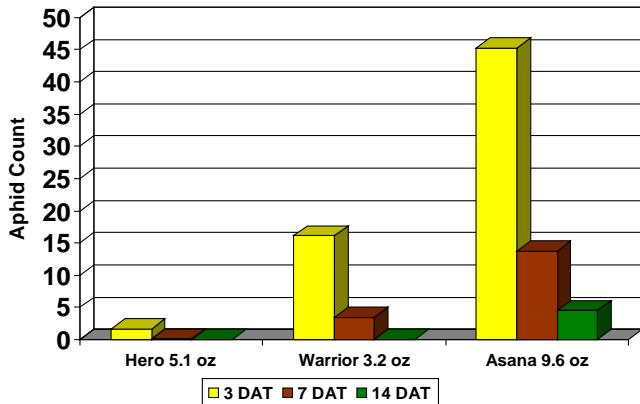
2006 Soybean Aphid Data, Univ. of NE

Mean aphid pop. 225/plant prior to treatment
97 @ 4 DAT, 73 @ 7 DAT, 223 @ 14 DAT, 1057 @ 21 DAT



2006 Soybean Aphid Data, Univ. of MN

Mean aphid pop. 146/plant prior to treatment
319.6 @ 3 DAT, 339.7 @ 7 DAT, 233.4 @ 14 DAT



2007 Soybean Insect Data, Univ. of IL

Mean aphid pop. 371/plant 2 days prior to treatment. Untreated check had:
237 @ 7 DAT, 76 @ 14 DAT, 13 @ 21 DAT

