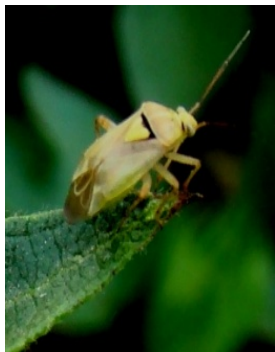




## Great News for Strawberry Growers Bad News for Lygus

Beleaf 50 SG insecticide offers a novel mode of action that specifically targets lygus and aphids. These insects stop feeding within 20 minutes after contacting Beleaf 50 SG insecticide. This rapid activity protects berries, while not disrupting beneficial insects and mites.

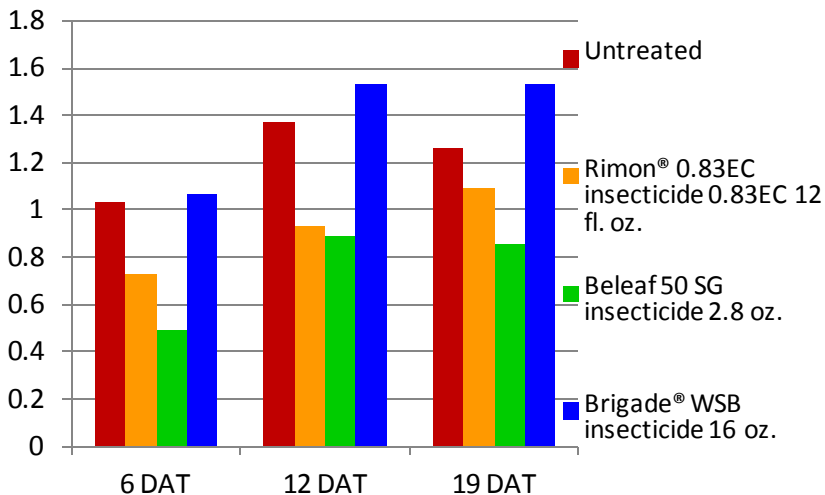


Fonicamid is the only insecticide in IRAC Group 29. (Neonicotinoids are in IRAC Group 4A.) There is no known cross resistance between fonicamid and other insecticide chemistries making Beleaf 50 SG insecticide an excellent tool for managing insect resistance.

### Lygus Control in Strawberry

#### Lygus per Plant

Frank Zalom, UC, Prundale, CA 2010



All treatments made with 100 GPA and include Dyne-Amic® adjuvant 0.25% v/v

### Inside This Issue

- **Beleaf® 50 SG insecticide**
- **Lygus Control**
- **Recommendations**

Contact your local FMC Representative for more information:

#### FMCCA/AZ

Chris Giannini:  
Market Manager:

Mobile: 559-972-4180  
California Coastal

Matt Rackerby:  
Market Manager:

Mobile: 559-737-3782  
Tulare County

Doug Hudson:  
Market Manager:

Mobile: 559-269-9266  
Central Valley

Kathryn Ruddy:  
Market Manager:

Mobile: 816-309-7772  
CA/AZ Desert

# FMC

Created by Kirk A. Sager

# HatchTrak<sup>SM</sup>



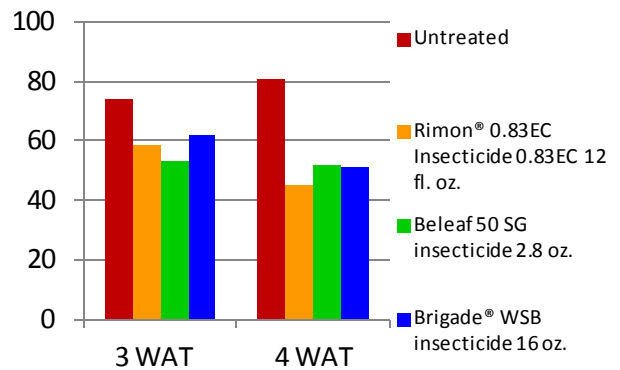
## How Beleaf® 50 SG Insecticide Works

Beleaf 50 SG insecticide works by contact and ingestion. Because of its translaminar activity, Lygus and aphids become intoxicated by Beleaf 50 SG insecticide and lose their ability to penetrate the leaf surface with their sucking mouth parts. This happens within 20 minutes of exposure to Beleaf 50 SG insecticide and the effect is irreversible. Death is by starvation and desiccation. Although there isn't a quick knock down, insect damage stops almost immediately.

Beleaf 50 SG insecticide alone, in tank mixes, or as part of a Lygus control program has been shown to reduce Lygus numbers and, more importantly, stop Lygus feeding and reduce the amount of damaged fruit.

## Lygus Control in Strawberry Percent Damaged Fruit

Frank Zalom, UC, Prundale, CA 2010



All Treatments made with 100 GPA and include Dyne-Amic® adjuvant 0.25% v/v

## Application Recommendations for Beleaf 50 SG Insecticide in Strawberries

Begin early before pest populations flare. Beleaf insecticide is not a knockdown material but it does quickly stop aphid and Lygus feeding. Because Beleaf 50 SG insecticide is easy on beneficial insects, predators and parasitoids aid in keeping pest populations low.

Coverage is essential for good control. Use higher spray volumes when crop canopy is dense and pest populations are high. Use a surfactant approved for use in strawberries

Optimum control is attained with two sequential applications of Beleaf 50 SG insecticide. Since you may always find a few Lygus adults migrating into the field – especially around the margins – make your second application when you start finding young nymphs again. Allow at least 7 days between Beleaf insecticide applications.

Always read and follow label directions. NOTE REGARDING RESTRICTED USE PESTICIDES: Anthem ATZ herbicide; Athena insecticide, Brigade 2EC Insecticide/Miticide, Brigade WSB Insecticide/Miticide, Brigadier Insecticide Capture 3RIVE 3D insecticide, Capture LFR Insecticide, Declare insecticide, Hero Insecticide, Mustang Insecticide, Mustang Maxx Insecticide, Pounce 25WP Insecticide, Stallion Brand Insecticide, Temity LFR Insecticide/Fungicide, Triple Crown Insecticide, Ethos XB Insecticide/Fungicide and Gladiator Insecticide/Miticide are **Restricted Use Pesticides**. NOTE FOR CALIFORNIA: Accurate Extra herbicide, Aim herbicide, Aim EC herbicide, Aim EW herbicide, Anthem herbicide, Anthem ATZ herbicide, Anthem Flex herbicide, Anthem MAXX herbicide, Authority Assist herbicide, Authority Elite herbicide, Authority First DF herbicide, Authority MAXX herbicide, Authority MTZ DF herbicide, Authority XL herbicide, Cadet herbicide, Chisum Herbicide, Command 3ME microencapsulated herbicide, Crusher Herbicide, Edition Broadspec herbicide, Edition Tankmix Herbicide, Marvel herbicide, Nimble Herbicide, Nuance Herbicide, Preemptor SCfungicide, Report Extra Herbicide, Solstice herbicide, Spartan 4F herbicide, Spartan Charge herbicide, Spartan Elite herbicide, Temity LFR Insecticide/Fungicide, Topguard EQ fungicide, Zeus Prime XC herbicide, Zeus XC herbicide, Capture 3RIVE 3D insecticide, Ethos XB Insecticide/Fungicide, Hero Insecticide, Mustang Maxx Insecticide, Display cotton harvest aid, Zoro Miticide and VGR Soil Amendment **are not registered for sale or use in California**. VGR Soil Amendment is not a pesticide. Beleaf and Carbine are trademarks of Ishihara Sangyo Kaisha, Ltd. Cercobin is a trademark of Nippon Soda Co., LTD. Sovran is a registered trademark of BASF. FMC, 3RIVE 3D, Accurate, Aim, Anthem, Athena, Authority, Brigade, Brigadier, Cadet, Capture, Chisum, Command, Crusher, Declare, Display, Edition, Ethos, Preemptor, Fracture, Fyfanon, Gladiator, Hero, Koverall, LFR, Marvel, Mustang, Nimble, Obey, Pounce, Report, Rhyme, Rovral, Shark, Solida, Solstice, Spartan, Stallion, Temity, Topguard, Topguard Terra, VGR and Zeus are trademarks and HatchTrak and Investing in farming's future are service marks of FMC Corporation or an affiliate. ©2017 FMC Corporation. All rights reserved. 3/17

Brigade WSB is a Restricted Use Pesticide.

Dyne-amic is a registered trademark of Helena Holding Company. Rimon 0.83EC is a registered trademark of Makhteshim Chemical Works Ltd.