

HatchTrakSM

July 20, 2017



HERO[®] INSECTICIDE & MUSTANG[®] MAXX INSECTICIDE ARE TOP CHOICES FOR WESTERN BEAN CUTWORM (WBC) CONTROL

SCOUTING FINDS EGG MASSES IN A PROLONGED SEASON, RESIDUAL AND KNOCKDOWN NEEDED



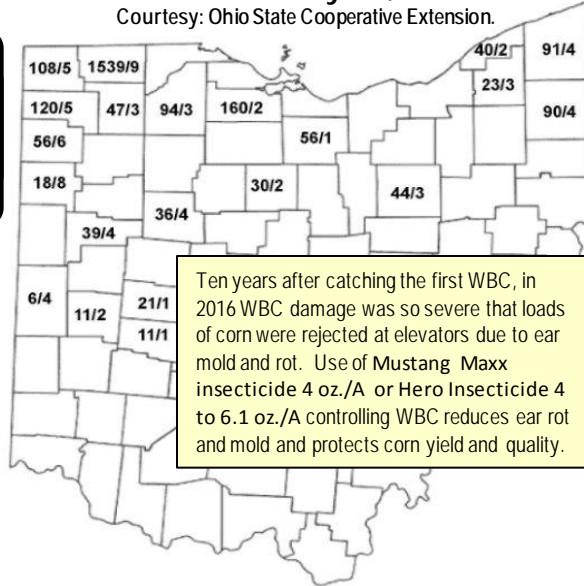
TRAPPED WBC ADULT IDENTIFICATION



Heavy Western Bean Cutworm (WBC) trap catches have been reported in Indiana and Ohio. The map at right shows the extent of trap catches in throughout Ohio since July 7th, 2017. Scouting for egg masses started 2 weeks ago through out Indiana, Michigan and Ohio, Hero Insecticide and Mustang Maxx insecticides recommended and applied.

Western Bean Cutworm Trap Counts in Ohio as of July 7th, 2017.

Courtesy: Ohio State Cooperative Extension.



Inside This Issue

Western Bean Cutworm Control With Hero[®] Insecticide & Mustang[®] Maxx Insecticide

Authored by Dr. Joseph P. Reed
FMC Tech Service
Mgr -Midwest Region Eastern Corn Belt
(217) 649-3249

- Stu Throop FMC Western MI RMM (443) 271-4191
- Lisa Stiles FMC Southeast MI. (989) 780-2032
- Ryan McDaniel FMC Ohio RMM (937) 605-7204



Where to Scout First ?

Prolonged corn planting in 2017 begs the question where to scout first? Listed below are some criterion for a faster assessment of WBC in your area.

1. Start scouting in localities where trap counts are highest
2. Due to Cry1F failures in 2016 and the 2017 prolonged planting season, pre-tassel and tasseling corn needs to be scouted
3. Check Non-Bt, refuge acres
4. CORN THRESHOLD To spray is 5% corn plants with egg masses
5. DRY BEAN THRESHOLD Treat if traps catch 50 or more WBC moths check local dry bean fields for pod feeding damage and treat. If 150 WBC moths are caught, a Mustang Maxx insecticide 4 oz./A or Hero Insecticide 4 to 6.4 oz./A

GROUND APPLICATION
Minimum Volume
10 gal/A

AERIAL APPLICATION
Minimum Volume
2 gal/A

Can be applied alone or in tank mixes with fungicides, post herbicides, and foliar fertilizers.

Ideal Time to Apply Hero Insecticide or Mustang Maxx Insecticide



Day 1 New Laid Eggs



Day 4 Pinkish Eggs



Day 7 Purple Eggs

Hatching

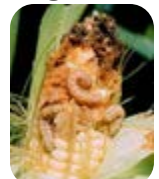
LEFT: Newly laid WBC eggs will be whitish, found before tassel
MIDDLE: Eggs turn to a pink then to purple expect larvae within 24hrs

RIGHT: Purple egg mass hatching, larvae are brown.

Western Bean Cutworm (WBC) Larvae are not cannibalistic. Once they are inside the ear they are no longer vulnerable to insecticides.

WBC larvae can make an entry point for ear rot disease infections and result in significant economic losses.

AVOID THIS



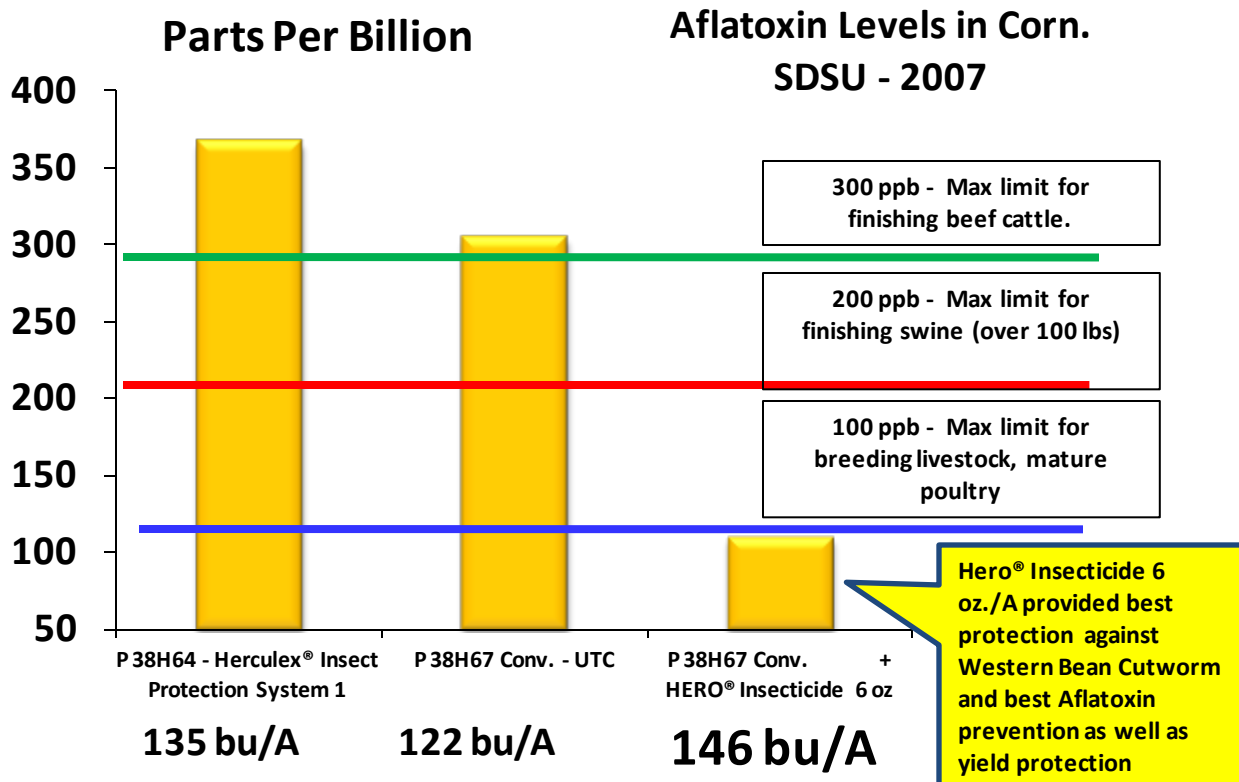


HERO[®] INSECTICIDE & MUSTANG[®] MAXX INSECTICIDE ARE TOP CHOICES FOR WESTERN BEAN CUTWORM (WBC) CONTROL

SCOUTING FINDS EGG MASSES IN A PROLONGED SEASON, RESIDUAL AND KNOCK DOWN NEEDED



STAY AHEAD OF WESTERN BEAN CUTWORM (WBC) DAMAGING CORN AND AFLATOXIN INFECTION BY APPLYING HERO INSECTICIDE FOR KNOCKDOWN AND RESIDUAL WBC CONTROL TO INCREASE YIELDS



Always read and follow label directions. NOTE REGARDING RESTRICTED USE PESTICIDES: Anthem ATZ herbicide; Athena insecticide, Brigade 2EC Insecticide/Miticide, Brigade WSB Insecticide/Miticide, Brigadier Insecticide Capture 3RIVE 3D insecticide, Capture LFR Insecticide, Declare insecticide, Hero Insecticide, Mustang Insecticide, Mustang Maxx Insecticide, Pounce 25WP Insecticide, Stallion Brand Insecticide, Temity LFR Insecticide/Fungicide, Triple Crown Insecticide, Ethos XB Insecticide/Fungicide and Gladiator Insecticide/Miticide are **Restricted Use Pesticides**. NOTE FOR CALIFORNIA: Accurate Extra herbicide, Aim herbicide, Aim EC herbicide, Aim EW herbicide, Anthem herbicide, Anthem ATZ herbicide, Anthem Flex herbicide, Anthem MAXX herbicide, Authority Assist herbicide, Authority Elite herbicide, Authority First DF herbicide, Authority MAXX herbicide, Authority MTZ DF herbicide, Authority XL herbicide, Cadet herbicide, Chisum Herbicide, Command 3ME microencapsulated herbicide, Crusher Herbicide, Edition Broadspec herbicide, Edition Tankmix Herbicide, Marvel herbicide, Nimble Herbicide, Nuance Herbicide, Preemptor SC fungicide, Report Extra Herbicide, Solstice herbicide, Spartan 4F herbicide, Spartan Charge herbicide, Spartan Elite herbicide, Temity LFR Insecticide/Fungicide, Topguard EQ fungicide, Zeus Prime XC herbicide, Zeus XC herbicide, Capture 3RIVE 3D insecticide, Ethos XB Insecticide/Fungicide, Hero Insecticide, Mustang Maxx Insecticide, Display cotton harvest aid, Zoro Miticide and VGR Soil Amendment **are not registered for sale or use in California**. VGR Soil Amendment is not a pesticide. Beleaf and Carbine are trademarks of Ishihara Sangyo Kaisha, Ltd. Cercobin is a trademark of Nippon Soda Co., LTD. Sovran is a registered trademark of BASF. FMC, 3RIVE 3D, Accurate, Aim, Anthem, Athena, Authority, Brigade, Brigadier, Cadet, Capture, Crusher, Command, Declare, Display, Edition, Ethos, Preemptor, Fracture, Fyfanon, Gladiator, Hero, Koverall, LFR, Marvel, Mustang, Nimble, Obey, Pounce, Report, Rhyme, Rovral, Shark, Solida, Solstice, Spartan, Stallion, Temity, Topguard, Topguard Terra, VGR and Zeus are trademarks and HatchTrak and Investing in farming's future are service marks of FMC Corporation or an affiliate. ©2017 FMC Corporation. All rights reserved. 11/16

Mustang Maxx and Hero are Restricted Use Pesticides.
 Herculexis a trademark of Dow AgriSciences