



Winter Wheat Considerations

Pest management in wheat is critical to optimize yields. Season-long weed management tactics are often overlooked but critical. Yield losses of 3-7 bu/A have been reported when allowing fall emerging winter annuals to compete into early spring.

As wheat breaks dormancy in the spring, disease, insect and weed management is paramount. Wheat crops protected from weeds, insects (aphids, armyworms) and diseases (tan spot, rust spp. septoria, powdery mildew, FHB) green-up through flowering will provide optimized sunlight capture and carbohydrate assimilation resulting in greatest yields.

9-26-18

INSIDE THIS ISSUE

- **Winter Wheat Considerations**

- **Technical Service Manager**

Nick Hustedde
618-978-2268

Contact your local FMC representative for more information:

Joe Krittenbrink
317-407-6883

Lonne Fry
309-221-5000

Jacob Heeren
815-471-7904

Jen Maruszewski
812-798-5049

Kathryn Taylor
540-305-9538

Morgan Mench
765-620-1608

Dylan Veracini
815-590-0651

While scouting wheat fields last spring, I noticed an increase in little barley and annual bluegrass density in certain fields. In order to effectively manage these species, tillage + residual herbicide or burndown + residual herbicide tactics should be employed. Selecting weed management programs targeting troublesome grass species in the fall can also reduce populations of winter annual broadleaves next spring allowing an easier finish.



SIU – Trial ID: 14-5A Herbicide Program	Henbit*	Little Barley	Yields
	-----% Control 4/12-----		Bu/A
Anthem® Flex herbicide 2.5 oz. delayed PRE	95	99	68
Axiom® DF herbicide 10 oz. (@ spike)	99	99	66
Osprey® herbicide 4.25 oz. + NIS 0.25% v/v (1-2 tillers)	99	25	48

*Anthem Flex herbicide is labeled for suppression of henbit.

Anthem Flex herbicide:

- Delayed PRE (~36 hrs. after planting) – Fourth tiller growth stage. Enhances residual control of tough weeds including Italian ryegrass, annual bluegrass, little barley downy brome, henbit and others.
- Provides residual activity on grass species with good rotation flexibility to non-STs and STs soybeans.
- Use Rate: 2.0-4.5 oz./A
- For delayed PRE applications, tank mix with glyphosate or other burndown herbicide to improve control of emerged weeds at application.
- For spring applications, apply up to four tillers to improve residual control of summer annual grasses and pigweed suppression.

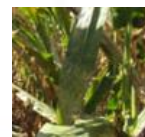
Harmony® Extra SG herbicide with TotalSol® soluble granules*

- Apply preplant-preemergence (prior to or shortly after planting) OR two leaf, prior to flag leaf.
- Fall application: 0.6-0.75 oz. + NIS
- Fall fb spring sequential: 0.7 oz. + NIS fb 0.7 oz. + NIS (Add 2,4-D as needed)
- Spring application: 0.75-0.9 oz. + NIS (Add 2,4-D as needed).
- Refer to label when tank mixing with liquid nitrogen fertilizer.

Anthem Flex herbicide and Harmony Extra SG with TotalSol can be applied in a sequential application or tank mix to provide broad-spectrum activity on winter annual weeds. Harmony Extra SG herbicide with TotalSol will clean up winter annual species that Anthem Flex herbicide is weaker on such as wild garlic.

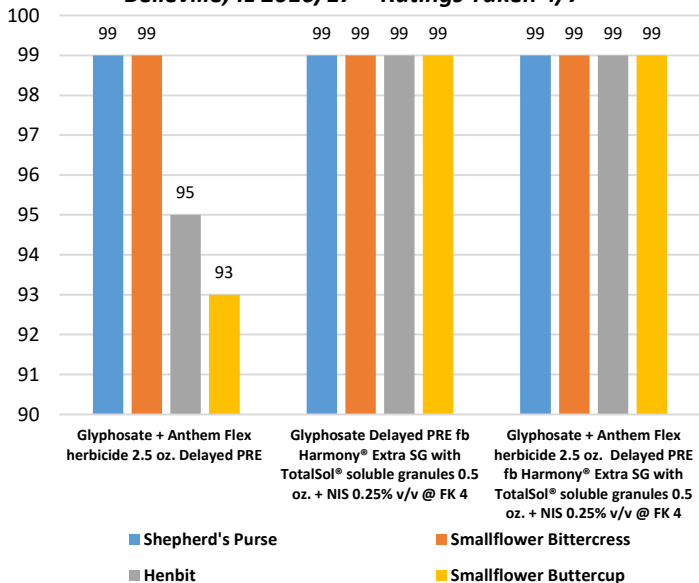
*Two applications of Harmony Extra SG herbicide may be made provided the total amount applied does not exceed 1.5 oz. per acre per crop season.

HatchTrakSM



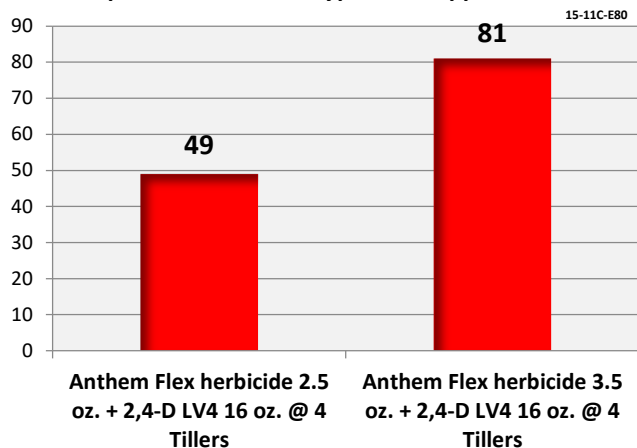
FMC

FMC Wheat Herbicide Programs Southern Illinois University Belleville, IL 2016/17 – Ratings Taken 4/7



Anthem[®] Flex Herbicide Tank Mixtures in Wheat SIU Belleville, IL – 2015

Waterhemp Control Prior to Glyphosate Application – 7-13-15

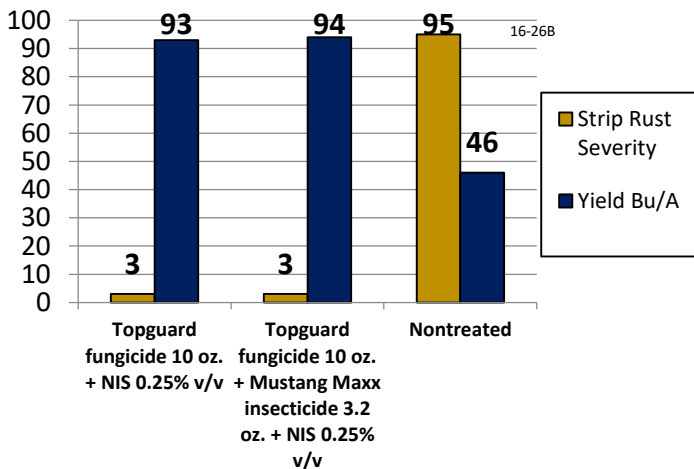


Don't let winter annuals or wild garlic take control of your wheat crop.



Harmony[®] Extra SG herbicide is formulated with TotalSol[®] soluble granule technology, a patented formulation that dissolves completely, getting more active ingredient on weeds for quicker, more complete control and leaving less residue in the tank for easier clean-out and ease of use.

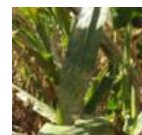
Influence of Fungicide Application on Stripe Rust in Winter Wheat Southern Illinois University – Belleville, IL 2016



Rust Control



HatchTrakSM



FMC

Mustang Maxx insecticide is a Restricted Use Pesticide. Always read and follow all label directions, restrictions and precautions for use. Some products may not be registered for sale or use in all states. As of November 1, 2017, the USEPA registrations for DuPont™ Harmony® Extra SG herbicide with TotalSol® soluble granules were sold to FMC by DuPont. FMC, Anthem, Harmony, Mustang, TotalSol and Topguard are trademarks and HatchTrak is a service mark of FMC Corporation or an affiliate. Axiom and Osprey are trademarks of Bayer CropScience. ©2018 FMC Corporation. All rights reserved. 09/18