



# Postemergence Control of Tough Broadleaves in Corn and Soybeans

## CADET® FEATURES

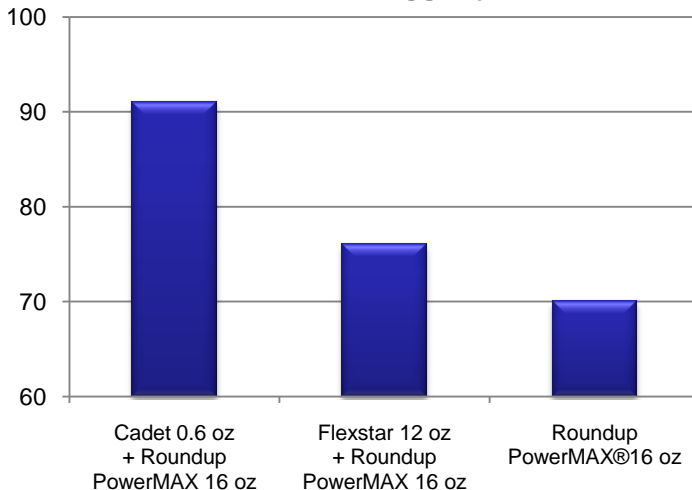
- ✓ Superior Control of Velvetleaf up to 36 inches tall.
- ✓ Control/Suppression of Lambsquarters, Waterhemp, Pigweeds, Nightshades, Jimsonweed, Mornigglories and others.
- ✓ Increased performance with glyphosate on kochia, wild buckwheat, ragweeds, marestail.
- ✓ Second Mode-of-Action to combat weed resistance.
- ✓ Enhance Glyphosate, Glufosinate tank-mixes and remove weed competition in a few days.
- ✓ Tank-mix with post corn herbicides - atrazine, Callisto®, Laudis®, Status®, and others for increased weed spectrum.
- ✓ Labeled for both CORN and SOYBEANS. No tank cleanout needed between crops.
- ✓ Tank-mix with conventional soybean herbicides like Pursuit®, Raptor®, Classic®, FirstRate®, Flexstar®, and grass products like Select®, Poast Plus®, and others.
- ✓ Wide application window up to 48" corn; Full flower on soybeans.
- ✓ No crop rotation restrictions. No carryover concerns.

### Weeds Labeled for Control or Suppression with Cadet.

|                 |                              |
|-----------------|------------------------------|
| Velvetleaf      | Annual morningglories        |
| Waterhemp       | Kochia*                      |
| Lambsquarters   | W. buckwheat*                |
| B. Nightshades  | P. smartweed                 |
| Redroot pigweed | Spiny pigweed                |
| Jimsonweed      | Smooth pigweed               |
| Burcucumber     | Spreading Dayflower          |
| Ragweeds*       | Marestail *                  |
| Spurred Anoda   | (*) <i>suppression only.</i> |

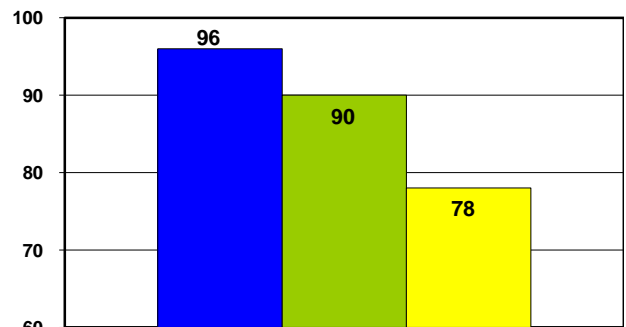
### Univ. of Illinois - 2008

#### % Control - Tall Morningglory - 14 DAT



### Cadet Weed Control

#### Purdue University



#### Velvetleaf Control - 25 DAT

- Cadet 0.5 oz + Glyphosate - 16 oz
- Resource@ 4.0 oz + Glyphosate 16 oz
- Glyphosate - 24 oz



# Postemergence Control of Tough Broadleaves in Corn and Soybeans



Cadet® 0.6 oz + Glyphosate 24 oz 10 DAT – 2007 (waterhemp, velvetleaf, lambsquarter)



Cadet 0.5 oz + Liberty® 32 oz + Atrazine 0.5 lb 7 DAT on 6-12" Lambsquarters, Kochia. – 2008.

## 2008 University Trial Results

|  | % Weed Control 3 Weeks after Application |                |            |
|--|--|----------------|------------|
|  | Waterhemp                                | Common Ragweed | Velvetleaf |
| <b>Cadet 0.5 oz + Roundup PowerMAX®16 oz</b> | 97                                       | 99             | 97         |
| <b>Glyphosate – 24 oz</b>                    | 90                                       | 97             | 90         |

### Cadet Use Recommendations for Corn (Field, Pop) and Soybeans

**0.4-0.6 oz/A** - Tank-mix rate with glyphosate, glufosinate herbicides in RR/LL Corn or Soybeans for better performance on broadspectrum of weeds.

**0.6-0.9 oz/A** – Control of labeled weeds alone or with post grass herbicide. Recommended rate with glyphosate, glufosinate for difficult weed situations.

**Corn** - Apply from 2 leaf stage to 48 inches tall.

**Soybeans** - Apply from 1<sup>st</sup> trifoliolate through full flowering.

**Adjuvants** - Apply with NIS at 1 qt./100 gal **or** Crop Oil Concentrate at 1-2 pt/A. UAN at 1-2 qt/A **or** AMS at 8-17 lb/100 gallon may be added. If applying with glyphosate herbicide that contains an adjuvant, no additional NIS is required with Cadet.

**Restrictions:** Do not apply within 60 days of Soybean harvest. Do not harvest Corn for forage for 30 days or 90 days for grain or stover after last application. Do not use more than 1.25 oz (0.0089 lb ai) per season.

**Always read and follow label directions.** FMC and Cadet are trademarks of FMC Corporation. Callisto and Flexstar are trademarks of a Syngenta Group Company; Classic is a trademark of E. I. duPont de Nemours & Company; Laudis and Liberty are trademarks of Bayer CropScience LP; FirstRate is a trademark of Dow AgroSciences LLC; Select and Resource are trademarks of Valent U.S.A. Corporation; Status, Pursuit, Raptor and Poast Plus are trademarks of BASF Corporation; and Roundup PowerMAX is a trademark of Monsanto Technology LLC. © 2009 FMC Corporation

LC-10-01MW-0409

1-888-59-FMC-AG · FMCcrop.com

