

## UNDER DEVELOPMENT FOR DISEASE CONTROL IN CORN TO OPTIMIZE PHOTOSYNTHETIC POTENTIAL AND GRAIN FILL

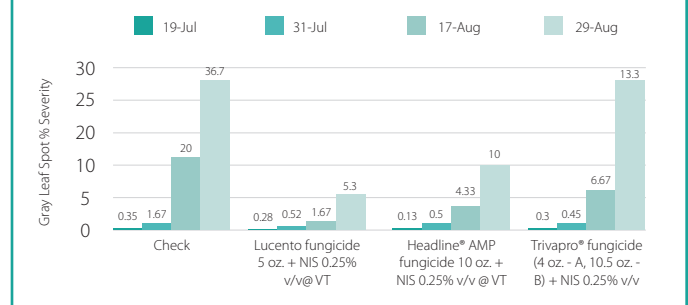
Lucento™ fungicide encompasses two separate modes of action delivering broad-spectrum disease efficacy, resistance management, plant mobility and residual control. Lucento fungicide provides preventative and curative activity for improved protection against fungal pathogens.

### ACTIVE INGREDIENTS IN LUCENTO FUNGICIDE:

FLUTRIAFOL (FRAC GROUP 3, DEMETHYLATION INHIBITOR)	
<ul style="list-style-type: none"> <li>Disrupts cell wall synthesis of fungi.</li> <li>Inhibits the production of sterols, important components of cell membranes.</li> <li>Active on developing spores.</li> <li>Delivers curative control of latent disease on the leaf.</li> </ul>	
<b>FEATURES AND BENEFITS:</b>	<ul style="list-style-type: none"> <li>Broad-spectrum disease efficacy.</li> <li>Low Koc value indicates weak attraction to clay and organic matter allowing soil availability for root uptake.</li> <li>Low Log Kow demonstrates water partiality enabling mobility with water and dissolved nutrients up the plant and out to leaf margins.</li> </ul>
<b>FLUTRIAFOL ACTIVE INGREDIENT DIFFERENTIATES BY:</b>	<ul style="list-style-type: none"> <li>Disease efficacy</li> <li>Plant mobility</li> <li>Soil uptake</li> <li>Residual activity</li> </ul>
BIXAFEN (FRAC GROUP 7, SUCCINATE DEHYDROGENASE INHIBITOR)	
<ul style="list-style-type: none"> <li>Complex II inhibitor of mitochondrial respiration.</li> <li>Leads to an inhibition of respiration and ATP (energy) assembly.</li> </ul>	
<b>FEATURES AND BENEFITS:</b>	<ul style="list-style-type: none"> <li>Plant mobility through cuticle absorption and xylem transport.</li> <li>Uniform leaf distribution.</li> <li>Preventative activity on developing spores.</li> </ul>
<b>BIXAFEN ACTIVE INGREDIENT DIFFERENTIATES BY:</b>	<ul style="list-style-type: none"> <li>New SDHI carboxamide fungicide.</li> <li>Broad-spectrum disease efficacy.</li> <li>Extended green leaf period.</li> <li>Increased yields.</li> </ul>

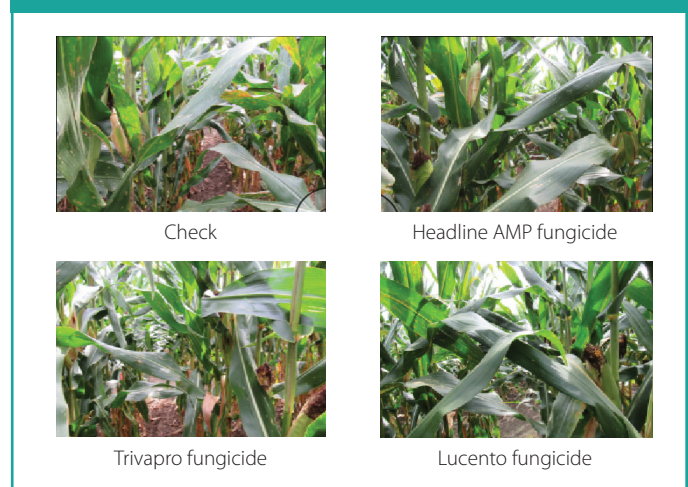
TECHNICAL INFORMATION	
<b>FRAC GROUP</b>	3, 7
<b>FORMULATION</b>	SC - Suspension Conc.
<b>LOADING</b>	4.17 lbs. AI/gal.
<b>SIGNAL WORD</b>	CAUTION

### FOLIAR FUNGICIDE EFFICACY TRIALS SOUTHERN ILLINOIS UNIVERSITY CARM, IL 2017



<b>USE RATE:</b>	• 4.0-5.5 fl. oz./A. For best results, apply 5.0-5.5 oz.
<b>APPLICATION GUIDELINES:</b>	<ul style="list-style-type: none"> <li>Emergence through R4 (early dough stage)</li> <li>Optimum application window: VT-R2</li> <li>REI – 12 hrs., 5 days for detasselling</li> <li>PHI – 10 days forage, 30 days grain and stover</li> </ul>
<b>ADJUVANTS:</b>	<ul style="list-style-type: none"> <li>Nonionic surfactant 0.25% v/v, or other high-quality surface active agent at labeled rate for improved coverage.</li> <li>Do not use adjuvant after the V8 and prior to the VT corn growth stage.</li> </ul>

### SOUTHERN ILLINOIS UNIVERSITY CARM, IL 2017 GRAY LEAF SPOT – R1 APPLICATIONS



Always read and follow all label directions, restrictions and precautions for use. Some products may not be registered for sale or use in all states. Lucento™ fungicide may not be registered for sale or use in all states. Contact your local FMC retailer or representative for details and availability in your state. FMC and Lucento are trademarks of FMC Corporation or an affiliate. Trivapro is a trademark of Syngenta Group Company. Headline is a trademark of BASF SE. ©2018 FMC Corporation. All rights reserved. 18-FMC-1205 06/18