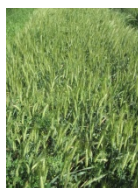


HatchTrakSM



ANTHEM[®] Flex HERBICIDE – EARLY SEASON FOUNDATION FOR ITALIAN RYEGRASS CONTROL IN WINTER WHEAT

Anthem Flex Herbicide Use in Spring or Winter Wheat

- **Flexible application timing:** Delayed Preemergence (80% of germinated wheat seed with ½” shoot length) thru Early Postemergence (up to 4th tiller). May be applied in a single application or as a sequential application.
- For use on both Spring and Winter Wheat. **Do not use on durum wheat.**
- **Flexible use rates:** 2.0-4.5 fl. oz./A depending on soil type
- **Flexible application methods:** Ground or aerial applications
- **Easy mixing and compatibility** with other labeled herbicides, fungicides, insecticides, and foliar nutrients
- **Excellent resistance management tool**
 - Reduce early season competition
 - Reduce population of Italian ryegrass for postemergence herbicide cleanup

Application Timing	Use Rate (fl. oz./A) by Soil Texture		
	ANTHEM Flex HERBICIDE		
	Coarse	Medium	Fine
Delayed Preemergence	2.0 - 2.7	2.75 - 3.5	3.5 - 4.5
Early Postemergence	2.0 - 2.7	2.75 - 3.5	3.5 - 4.5

SOIL TYPE & TEXTURE*		
Coarse	Medium	Fine
Sand	Loam	Sandy clay
Loamy sand	Silt loam	Silty clay loam
Sandy loam	Sandy clay loam	Silty clay
	Silt	Clay loam
		Clay

*Use the following link to help determine soil class and texture.
<https://websoilsurvey.sc.egov.usda.gov/App/WebSoilSurvey.aspx>

Use Directions and Restrictions

- Do not apply preplant incorporated (PPI).
- Apply delayed preemergence through 4th tiller wheat.
- Plant wheat a minimum of 1 inch deep.
- Do not plant wheat over 1.5 inches deep.
- Do not irrigate fields after a delayed preemergence application until wheat spikes.
- Apply prior to weed germination.
- Anthem Flex herbicide must be activated to provide control; ½ inch of rainfall or irrigation is required to activate.
- May be tank mixed with most premerge herbicides.
- Tankmix with glyphosate or other labeled postemergence herbicides to control emerged weeds.
- Do not harvest, feed or graze within 7 days after application.
- See section 3 label for a complete list of use directions and restrictions.



- Benefits and Rates
- Winter Wheat Recommendations
- Use Directions and Restrictions
- Italian ryegrass results, 2016-17

Contact your local FMC marketing manager for more information

Michael Myers
 PA, NJ, NY & New England
 717-304-8957

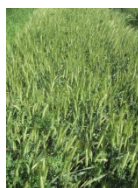
Tyler Williams
 DE, MD, WV & VA
 270-403-1467

Chris Leon
 NE Technical Service Mgr
 601-927-9410
christopher.leon@fmc.com



Authored by: Kirk A. Sager
 FMC – Pacific Northwest

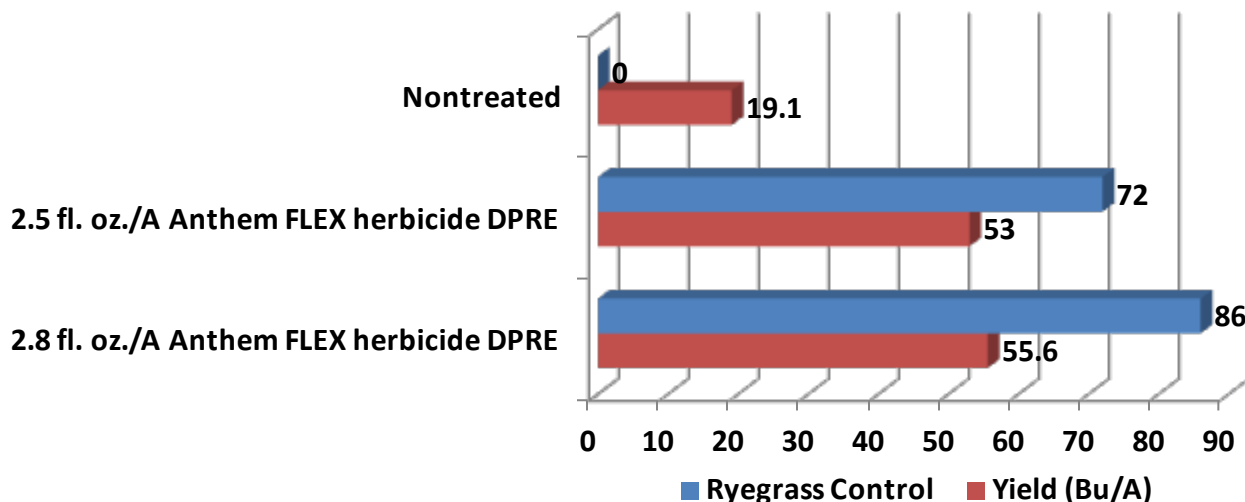
HatchTrakSM



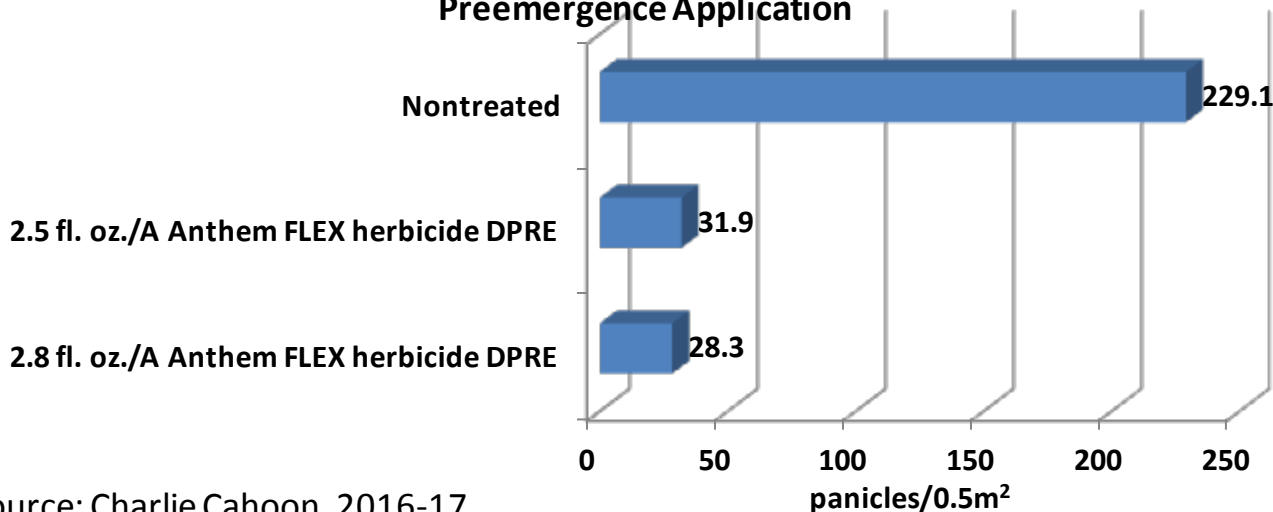
Trial work conducted by Charlie Cahoon at Painter, VA in 2016-17 demonstrates the benefit of an Anthem[®] Flex herbicide delayed preemergence application for early season management of Italian ryegrass. Italian ryegrass control was 72 to 86% when 2.5 or 2.8 fl. oz./A was applied, respectively. This reduced Italian ryegrass panicle number by 86-87% compared to the nontreated check.

The major benefits of Anthem Flex herbicide use delayed preemergence include 1) reducing early season weed competition, 2) reducing the population of Italian ryegrass to control with a follow up postemergence herbicide which, 3) improves resistance management of postemergence ryegrass herbicides since fewer Italian ryegrass are present following delayed preemergence applications of Anthem Flex herbicide.

Italian ryegrass Control and Wheat Yield (bu/A) Following Anthem Flex Herbicide Delayed Preemergence Application



Italian ryegrass Panicles Per 0.5 m² Following Anthem Flex Herbicide Delayed Preemergence Application

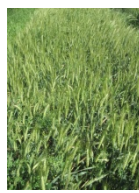


Source: Charlie Cahoon, 2016-17

Location: Virginia Tech ESAREC; Painter, VA

Soil type: BOJAC sandy loam (67% sand, 28% silt, 5% clay), 1% organic matter

HatchTrakSM



2.5 fl. oz./A Anthem[®] Flex herbicide DPRE

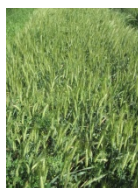


2.8 fl. oz./A Anthem Flex herbicide DPRE



No Herbicide Check

HatchTrakSM



888-59-FMC-AG FMCCROP.COM

Always read and follow label directions. NOTE REGARDING RESTRICTED USE PESTICIDES: Anthem ATZ herbicide; Athena insecticide, Brigade 2EC Insecticide/Miticide, Brigade WSB Insecticide/Miticide, Brigadier Insecticide Capture 3RIVE 3D insecticide, Capture LFR Insecticide, Declare insecticide, Hero Insecticide, Mustang Insecticide, Mustang Maxx Insecticide, Pounce 25WP Insecticide, Stallion Brand Insecticide, Temitry LFR Insecticide/Fungicide, Triple Crown Insecticide, Ethos XB Insecticide/Fungicide and Gladiator Insecticide/Miticide are **Restricted Use Pesticides**. NOTE FOR CALIFORNIA: Accurate Extra herbicide, Aim herbicide, Aim EC herbicide, Aim EW herbicide, Anthem herbicide, Anthem ATZ herbicide, Anthem Flex herbicide, Anthem MAXX herbicide, Authority Assist herbicide, Authority Elite herbicide, Authority First DF herbicide, Authority MAXX herbicide, Authority MITZ DF herbicide, Authority XL herbicide, Cadet herbicide, Chisum Herbicide, Command 3ME microencapsulated herbicide, Crusher Herbicide, Edition Broadspec herbicide, Edition Tankmix Herbicide, Marvel herbicide, Nimble Herbicide, Nuance Herbicide, Preemptor SC fungicide, Report Extra Herbicide, Solstice herbicide, Spartan 4F herbicide, Spartan Charge herbicide, Spartan Elite herbicide, Temitry LFR Insecticide/Fungicide, Topguard EQ fungicide, Zeus Prime XC herbicide, Zeus XC herbicide, Capture 3RIVE 3D insecticide, Ethos XB Insecticide/Fungicide, Hero Insecticide, Mustang Maxx Insecticide, Display cotton harvest aid, Zoro Miticide and VGR Soil Amendment **are not registered for sale or use in California**. VGR Soil Amendment is not a pesticide. Beleaf and Carbine are trademarks of Ishihara Sangyo Kaisha, Ltd. Cercobin is a trademark of Nippon Soda Co., LTD. Sovran is a registered trademark of BASF. FMC, 3RIVE 3D, Accurate, Aim, Anthem, Athena, Authority, Brigade, Brigadier, Cadet, Capture, Chisum, Command, Crusher, Declare, Display, Edition, Ethos, Preemptor, Fracture, Fyfanon, Gladiator, Hero, Koverall, LFR, Marvel, Mustang, Nimble, Obey, Pounce, Report, Rhyme, Rovral, Shark, Solida, Solstice, Spartan, Stallion, Temitry, Topguard, Topguard Terra, VGR and Zeus are trademarks and HatchTrak and Investing in farming's future are service marks of FMC Corporation or an affiliate. ©2016 FMC Corporation. All rights reserved. 11/16